

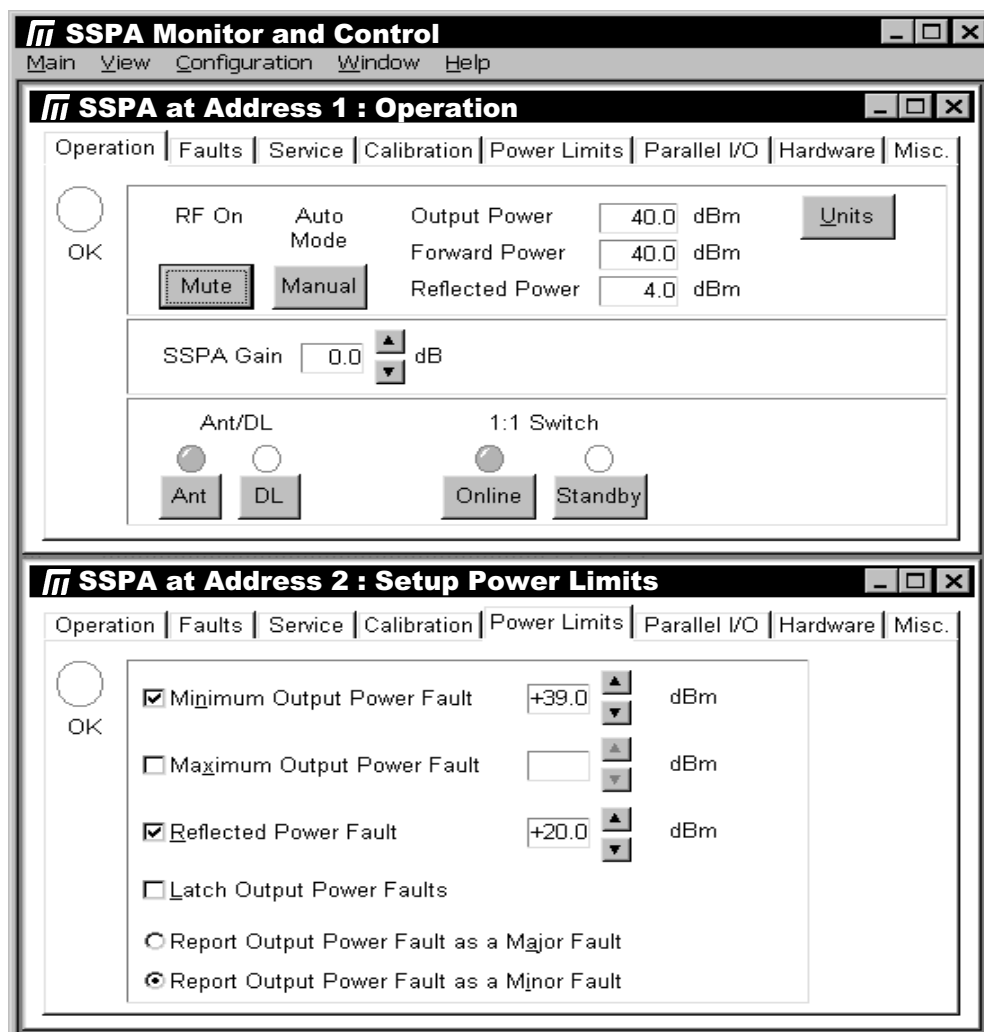
## SSPA Monitor and Control Software

### Introduction

VertexRSI MAXCON™ software, developed for use under Microsoft® Windows®, allows customers to easily monitor and control their Solid State Power Amplifier (SSPA). The software allows remote operation of multiple SSPAs in real-time, using a standard user interface. It is compatible with all current VertexRSI SSPAs and SSPA systems with serial I/O.

### Features

- Connect to multiple SSPAs on multiple COM ports
- Fault status of connected SSPAs is always displayed
- Great for indoor control of outdoor SSPAs
- Connect to RCP-1000 remote controllers for added features
- Store/retrieve configuration information for SSPAs
- 8 Areas of monitor and control:
  - Operation
  - Faults
  - Service
  - Setup
  - Calibration
  - Power
  - Parallel I/O
  - Hardware
  - Miscellaneous



## Overview

The program can connect to multiple SSPAs—either on multiple COM ports, or on a single COM port using an RS-422 or RS-485 interface.

The software uses a Multiple Document Interface (MDI). You may connect to multiple SSPAs simultaneously, and each will display within its own window.

Monitor and control of the SSPA has been divided into 8 areas: Operation, Faults, Service, Setup Calibration, Setup Power Limits, Setup Parallel I/O, Setup Hardware, and Miscellaneous. The program displays information and commands related to one of these areas as a “view,” showing a single view at a time. You may easily change to another view at any time. Fault status of

connected SSPAs is always displayed, regardless of the view selected.

The program maintains a memory of currently connected SSPAs. If the program is abnormally terminated (for example, by a power failure), then when it is restarted it will automatically reconnect to the SSPAs.

The program, supplied on a single 3½" high-density diskette, includes an installation utility and on-line help.

## Requirements

The software requires a computer capable of running Microsoft® Windows®, version 3.1 or greater. The program requires approximately 1.5 megabytes of hard drive space. In addition, at least one COM port must be available for use in communicating with the SSPA.

The SSPA must have firmware version 2.30 or greater. An RS-232, RS-422, or RS-485 cable connection must be provided between the computer and SSPA.



VertexRSI  
SSPA System

Remote Location



Microsoft and Windows are registered trademarks of Microsoft Corporation.



8044 Rev. C 5/12/00  
Specifications are subject to change at VertexRSI's discretion.