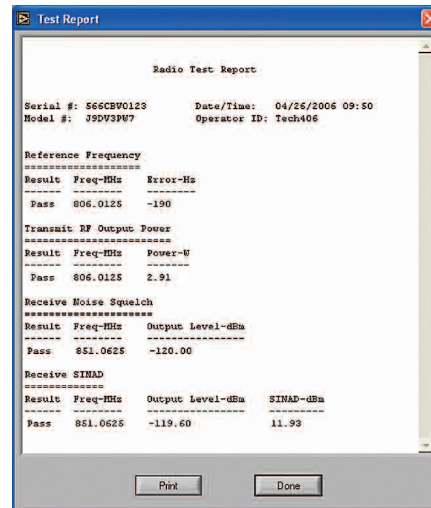
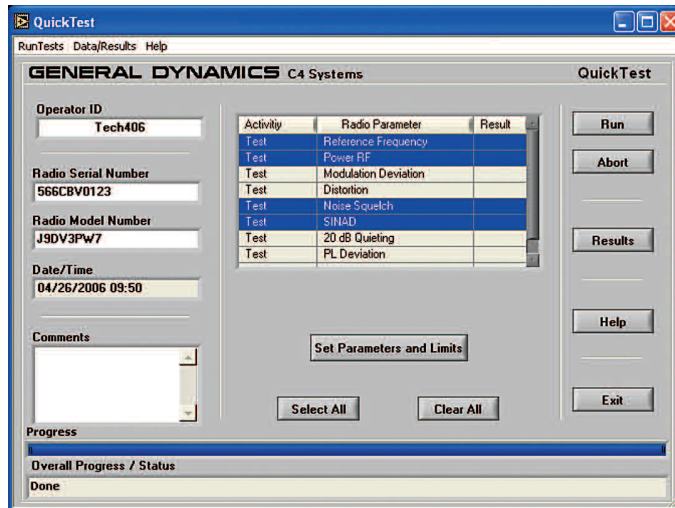


QuickTest

For Two-way Radio Testing



Automated Test

General Dynamics is pleased to offer a powerful new tool for the R2600 line of communications system analyzers. QuickTest is an automated test application that runs on a standard PC. The PC automatically controls the systems analyzer to alleviate most operator intervention. QuickTest performs all user selected test procedures, including critical transmitter and receiver performance tests – *in a fraction of the time it takes to perform the same tasks manually.*

Fast, accurate, easy to use

The QuickTest software application takes the guesswork out of testing your radios. Simply connect the radio, select the tests you wish to perform from the QuickTest menu, and press “Run.” The software automatically configures the analyzer, taking measurements as needed. When required, the user is prompted to key the radio or make adjustments. All measurement results are stored for easy retrieval in a comma separated variable (CSV) format.

Explicit prompts, convenient help screens, and clear pass/fail indicators allow even non-technical personnel to fully test your radios – freeing the technicians to do actual repairs.

Benefits/Features

Significantly Reduced Test Times

- A typical radio test can be completed in less than 5 minutes.
- Pass/Fail indication reveals defective radios.

Easy to Use

- Standard Windows® interface makes QuickTest simple and intuitive to operate.
- No technical expertise required.
- Installs as part of the ToolKit applications suite.
- Automatically configures analyzer for each test.

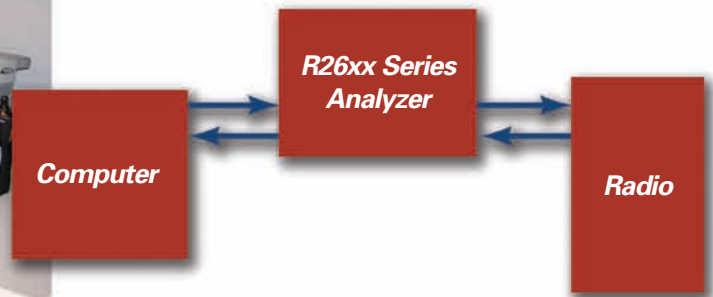
Accurate and Repeatable Results

- Utilizes the R2600 Series Communication Systems Analyzer for dependable performance.
- All results are automatically saved and can be viewed and printed at any time.
- Adjustable test limits allow radios to be tested to manufacturer recommended tolerances as desired.

Capabilities



QuickTest System Configuration



Tests Performed

Transmitter Tests

- Reference Frequency
- RF Output Power
- Modulation Deviation
- PL Deviation

Receiver Tests

- 20 dB Quieting
- Distortion
- Noise Squelch
- SINAD

System Requirements

To automate your existing test configuration:

- Any R2600 Series Communications System Analyzer (see minimum requirements).
- QuickTest software.
- RS232 9-pin to 25-pin cable. (USB to RS232 serial cable needed if computer does not have an RS232 port available.)
- Windows®-compatible computer with an available serial or USB port, Windows® 95 or newer, 50 Mbytes free space on hard drive, and CD ROM.
- Additional test cables required, varies by radio.

Output

Program results are automatically stored to a log file in a readily searchable CSV format. All data is time stamped and includes the radio's serial and model numbers.

Ordering information

QTS001 QuickTest

Minimum Requirements for Communications System Analyzer

<u>Model</u>	<u>Firmware</u>
R2600	V6.08 (or newer)
R2625	V6.08 (or newer)
R2660	V6.08 (or newer)
R2670	V6.08 (or newer)
R2680	V6.08 (or newer)

General Dynamics sells a complete line of communications test equipment for analog and digital, conventional and trunked radios and radio systems. Whether you are doing subscriber repair of a traditional two-way radio or testing and aligning a complex digital system, General Dynamics has a product that will meet your needs. Contact your manufacturer representative or distributor for more information.

© 2006 General Dynamics. All rights reserved. All other product or service names are the property of their respective owners. Reg. U.S. Pat. & Tm. Off. Printed in the U.S.A.

General Dynamics reserves the right to make changes in its products and specifications at any time and without notice.

GENERAL DYNAMICS

1915 Harrison Road, Longview, TX 75604
 Telephone: (903) 295-1480 • Fax: (903) 295-1479 • Email: cte@gdsatcom.com

Hudson 5474-549 • 5/06

Please visit our web site at www.gdsatcom.com/cte.html to find the representative in your area.